

## S-Series CIP Units



Our S-series CIP units are specifically designed and developed to provide tightly controlled, validated, cleaning and sterilization operations on process equipment within specific niche segments of the life science, and pharmaceutical industries.

The S-series CIP units are designed to meet the most stringent process and regulatory requirements, as found in most sterile (liquid) formulation & filling facilities in biotech, sterile and vaccine manufacturing.

CIP/SIP unit equipped with full recipe editor, tight process control, monitoring & reporting for applications, such as:

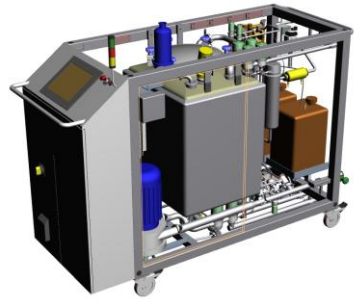
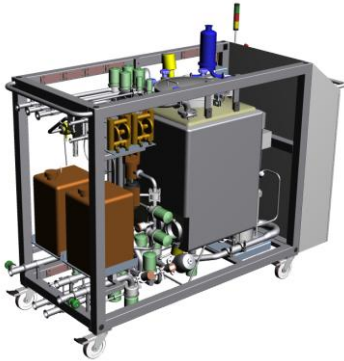
- Aseptic fill lines w/isolator technology
- Filter stations
- Formulation vessels
- Filling vessels & transfer lines
- Bio reactors
- Ultra filtration skids
- Freeze dryers
- Glove box isolators

Our decentralized CIP and CIP/SIP philosophy combined with the advanced, modular, technology platform facilitate full use and tight control, monitoring, and documentation of all critical parameters (TACCT) for very efficient, reproducible, cleaning & sterilization operations.

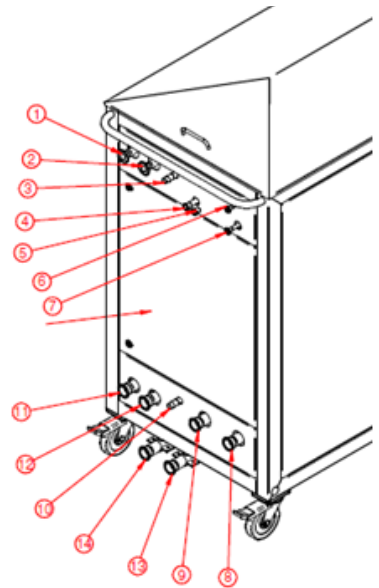
- Suited for cleaning of sterile formulation & filling equipment
- Full TACCT cleaning performance & flexibility
- Designed for high end cGMP and FDA regulated facilities
- Highly configurable, compact, cleaning & sterilization unit
- S88 based software platform with our unique PLC driven recipe system
- Full monitoring & reporting of critical process parameters



## S-Series CIP Units - Utilities & Connections



1	USP water	min 10 GPM @ 20 psi
2	WFI water	min 10 GPM @ 20 psi
3	Plant steam	min 30 psi, 200 lbs/hour
4	Purge air / nitrogen	up to 10 CFM @ 120 psi
5	Instrument air	min 90 psi
6	Ext caustic storage	Optional detergent refill
7	Ext acidic storage	Optional detergent refill
8	CIP supply 1	<150 psi and 60 gpm
9	CIP supply 2	<150 psi and 60 gpm
10	Condensate	<200 lbs/hour
11	CIP return 1	<65 gpm
12	CIP return 2	Optional (<65 gpm)
13	Drain	<65 gpm
14	Kiln Drain	Optional (<65 gpm)
15	Power (not shown)	3 x 480 N+PE, 60 Hz, 40/60 Amps



### Other Cleaning Related Equipment & Services:

- QA documentation packages
- Commissioning & SAT
- Equipment Qualification (IQ/OQ)
- Cleaning validation support
- Preventive maintenance
- Spare parts
- Phone support & emergency repairs
- CIP cycle development



## Contact Us

### McFlusion Corp.

1480 Sandhill Drive, #8  
Ancaster, ON L9G 4V5  
Canada

### McFlusion Inc.

2112 Case Pkwy S, #8  
Twinsburg, OH 44087  
USA

### McFlusion Aps

Ådalen 7  
DK-4600 Køge  
Denmark

Phone: 1-800-341-8616 • Fax: 1-877-934-6788 • Email: [mail@mcflusion.com](mailto:mail@mcflusion.com)



### Satellite office – US North West

20806 NE Sierra Dr.  
Bend, OR 97701  
USA

### Satellite office – US North East

4 Woodhaven Road  
Gibbsboro, NJ 08026  
USA

### Other Cleaning Related Equipment & Services:

- QA documentation packages
- Preventive maintenance
- Commissioning & SAT
- Spare parts
- Equipment Qualification (IQ/OQ)
- Phone support & emergency repairs
- Cleaning validation support
- CIP cycle development

[www.mcflusion.com](http://www.mcflusion.com)

PREMIUM KNOWLEDGE • PREMIUM TECHNOLOGY • PREMIUM EQUIPMENT